

**Description**

Filter with additional differential mode rejection in low frequency. For use with switched mode power supplies to reduce noise from power supply back into the mains. Filter also provides good attenuation of incoming interference

**Features**

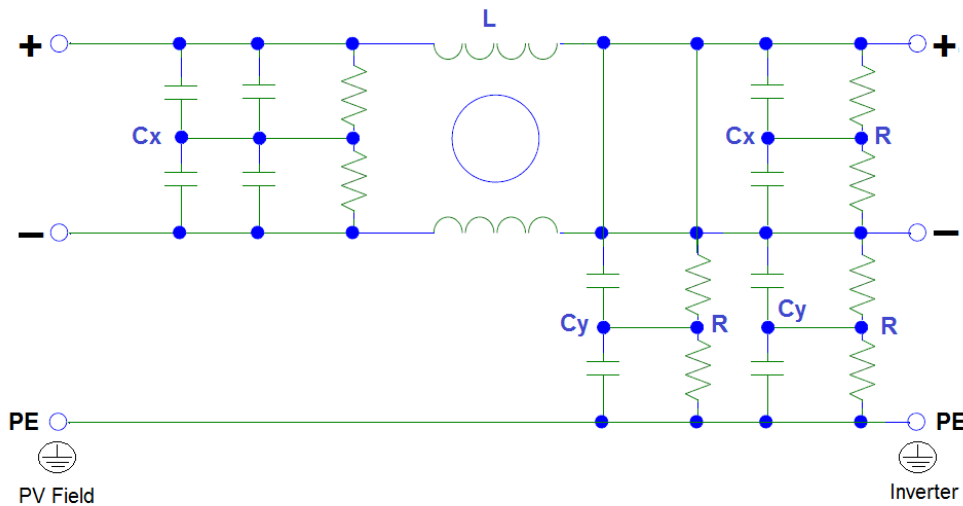
- Double stage filter
- Medical Version available
- High conducted attenuation performance
- Superior Performance
- Chassis mounting

**Applications**

- PV Inverters
- UPS
- DC Motor Drives
- DC Quick Chargers
- Energy / Battery storage systems
- DC Charger Installations





**Typical circuit Diagram**



**Technical Specifications**

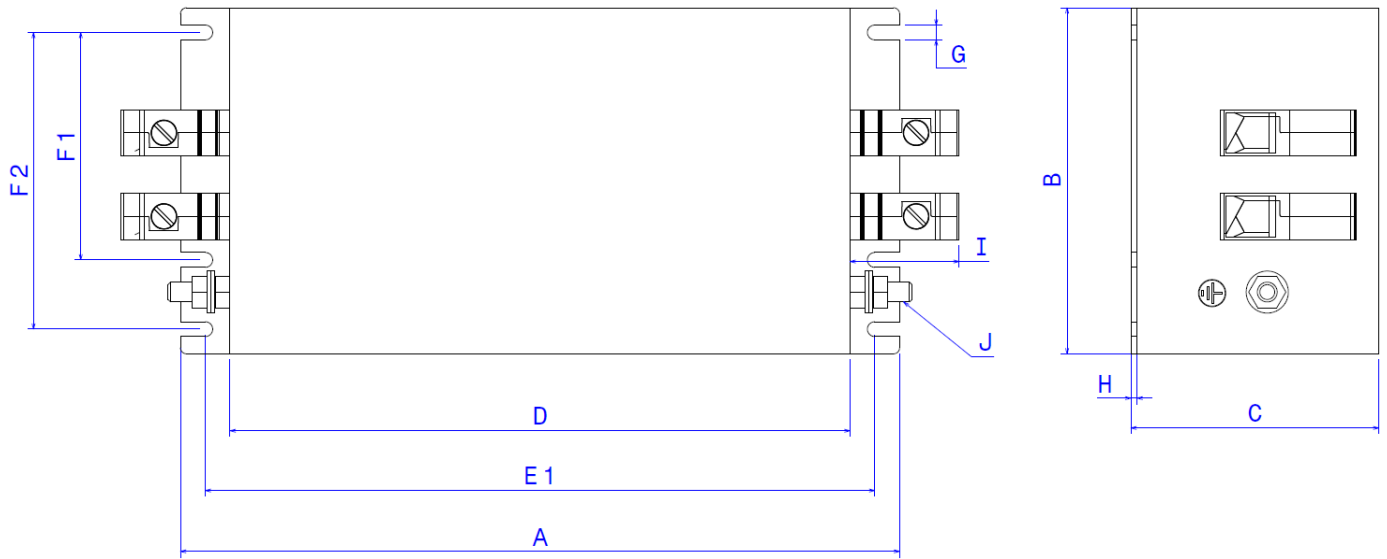
Maximum Continuous Operating Voltage	: 1200 VDC Max
Current ratings	: 25A to 2500A @ 55°C
High Potential test voltage	: +, - to PE 3600VDC for 2 sec + to - 3000VDC for 2 sec
Overload Capability	: 135% of Rated current for 15 minutes
Design Corresponding to	: UL1283, CSA 22.2 No.8-13 and IEC 60939
Flammability corresponding to	: UL 94 V-0
Temperature range	: -25°C to +100°C
Climatic Category	: 40/100/21

## Selection Table

Part Number	Ordering Code	Rated Current @55°C	Input / Output Connections		Weight (Kilo Grams)(Max)
					
MF610S-25	S610S00025S	25A	16	-	1.2
MF610S-50	S610S00050S	50A	35	-	1.8
MF610S-75	S610S00075S	75A	35	-	2
MF610S-100	S610S00100S	100A	50	-	3
MF610S-150	S610S00150S	150A	95	-	5
MF610S-250	S610S00250S	250A	-	BB	5.2
MF610S-400	S610S00400S	400A	-	BB	6.5
MF610S-600	S610S00600S	600A	-	BB	7
MF610S-800	S610S00800S	800A	-	BB	9.5
MF610S-1000	S610S01000S	1000A	-	BB	9.8
MF610S-1500	S610S01500S	1500A	-	BB	17
MF610S-2500	S610S02500S	2500A	-	BB	28
MF610SL-25	S610SL0025S	25A	16	-	1.2
MF610SL-50	S610SL0050S	50A	35	-	1.8
MF610SL-75	S610SL0075S	75A	35	-	2
MF610SL-100	S610SL0100S	100A	50	-	3
MF610SL-150	S610SL0150S	150A	95	-	5
MF610SL-250	S610SL0250S	250A	-	BB	5.2
MF610SL-400	S610SL0400S	400A	-	BB	6.5
MF610SL-600	S610SL0600S	600A	-	BB	7
MF610SL-800	S610SL0800S	800A	-	BB	9.5
MF610SL-1000	S610SL1000S	1000A	-	BB	9.8
MF610SL-1500	S610SL1500S	1500A	-	BB	17
MF610SL – 2500	S610SL2500S	2500A	-	BB	28

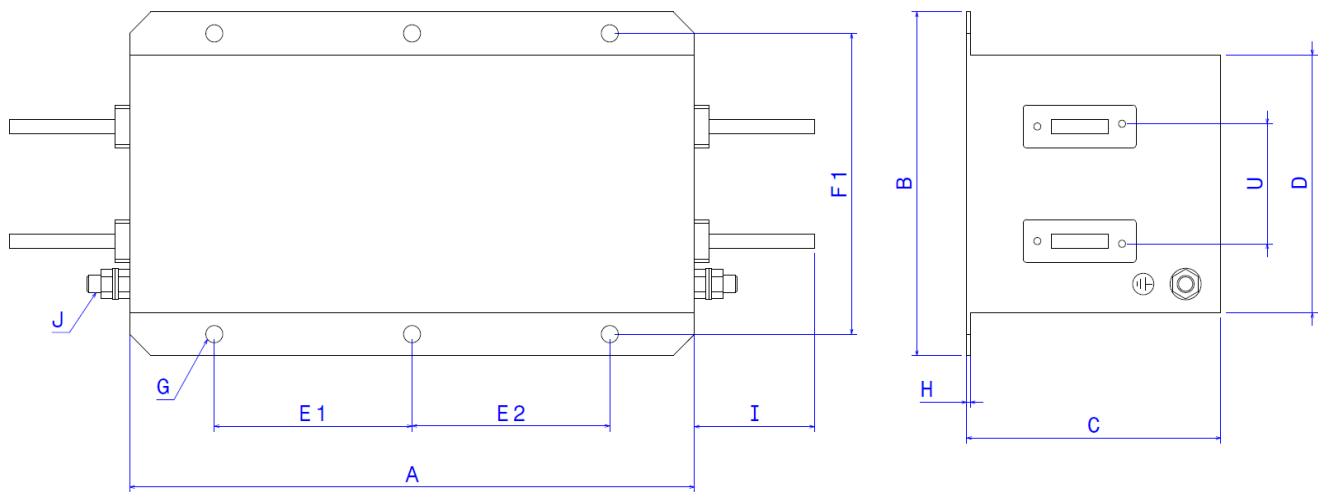
\*L – Low leakage type without Y capacitors versions

## 25A to 150A Types



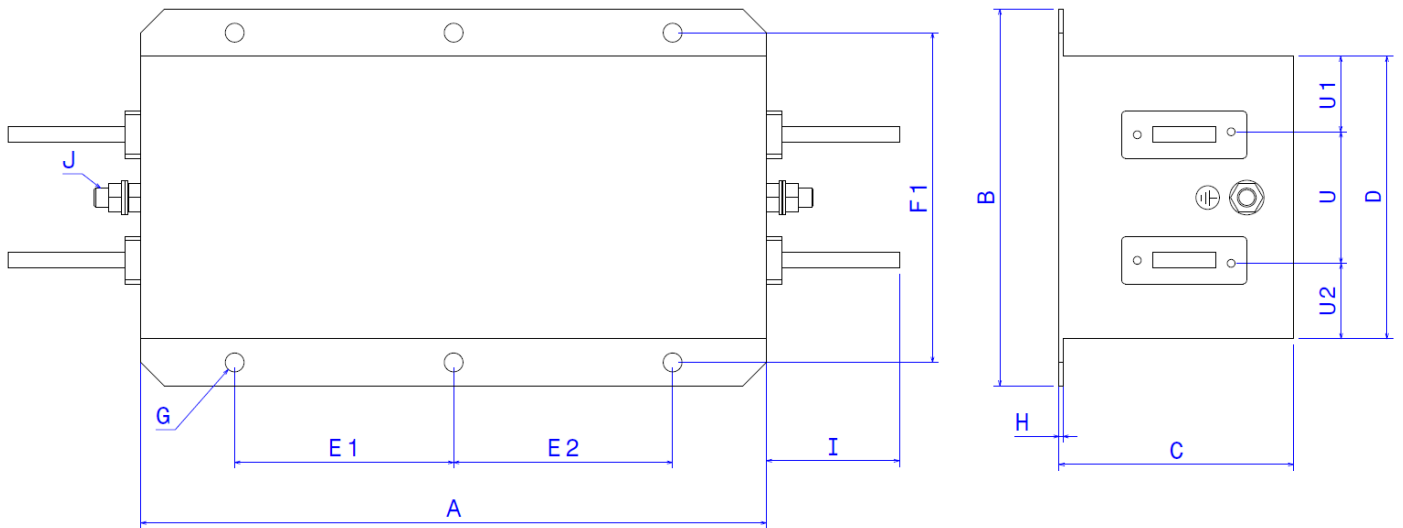
Material/Finish : CRCA/Nickel Plating

## 250A to 600A Types



Material/Finish : CRCA/Nickel Plating

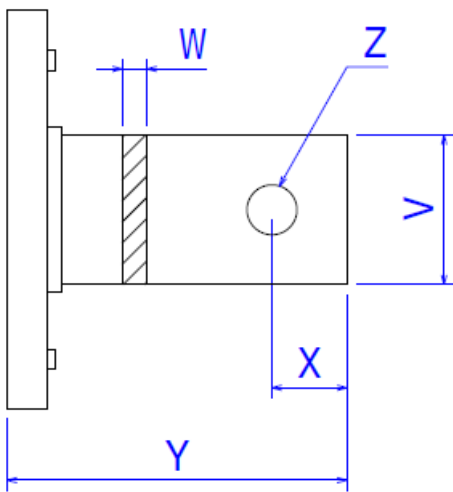
## 800A to 2500A Types



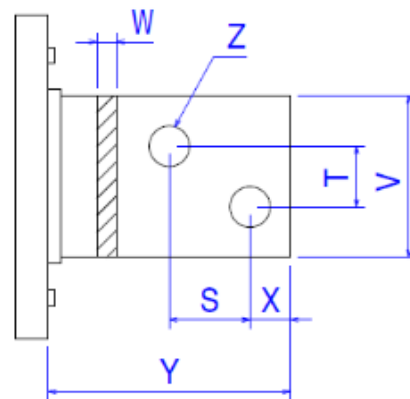
Material/Finish : CRCA/Nickel Plating

## Bus bar Details

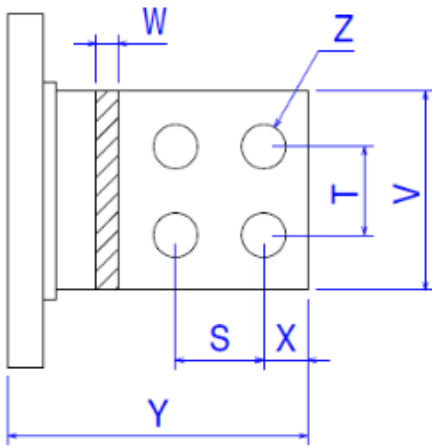
### 250A to 1000A Types



### 1500A Types



## 2500A Types

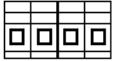


All dimensions in mm; Tolerances according: ISO2768-m

## Dimensions

	25A	50A	75A	100A	150A	250A	400A	600A	800A	1000A	1500A	2500A
<b>A</b>	170	200	200	220	250	300	300	300	300	300	300	400
<b>B</b>	80	95	95	125	140	180	190	190	200	200	200	250
<b>C</b>	65	80	80	95	115	110	110	110	140	140	150	180
<b>D</b>	140	170	170	190	220	130	140	140	150	150	150	195
<b>E1</b>	152.5	182.5	182.5	202.5	232.5	130	130	130	130	130	130	190
<b>E2</b>						110	110	110	110	110	110	150
<b>F1</b>	45	60	60	80	100	155	165	165	175	175	175	225
<b>F2</b>	60	75	75	100	120							
<b>G</b>	5.5	5.5	5.5	5.5	5.5	∅12	∅12	∅12	∅12	∅12	∅12	∅12
<b>H</b>	1	1.5	1.5	1.5	2	2	2	2	3	3	3	3
<b>I</b>	25	39	39	45	51	58	58	58	65	65	110	100
<b>J</b>	M5	M6	M6	M8	M10	M10	M10	M10	M12	M12	M12	M16
<b>S</b>											43	35
<b>T</b>											26	35
<b>U</b>						70	70	70	70	70	70	100
<b>U1</b>									45	45	55	61
<b>U2</b>									35	35	25	34
<b>V</b>						20	25	25	40	40	60	70
<b>W</b>						5	6	8	8	8	10	15
<b>X</b>						15	15	15	20	20	17	20
<b>Y</b>						58	58	58	65	65	110	100
<b>Z</b>						∅9	∅10.5	∅10.5	∅14	∅14	∅14	∅14

## Connectors Cross Sections

	16	35	50	95
<b>Solid Wire</b>	16mm <sup>2</sup>	35mm <sup>2</sup>	50mm <sup>2</sup>	95mm <sup>2</sup>
<b>Flex wire</b>	10mm <sup>2</sup>	25mm <sup>2</sup>	50mm <sup>2</sup>	95mm <sup>2</sup>
<b>AWG type wire</b>	AWG 6	AWG 2	AWG 1/0	AWG 4/0
<b>Recommended torque</b>	1.5-1.8 NM	4.0-4.5 NM	7-8 NM	17-20 NM

## Typical Insertion Loss

Frequency (MHz)	0.15	0.5	1	10	30
<b>Common Mode in dB</b>	65	75	55	45	40
<b>Differential Mode in dB</b>	65	70	50	35	30